

How to Read Piano Sheet Music: Notes on the Lines and between the Lines

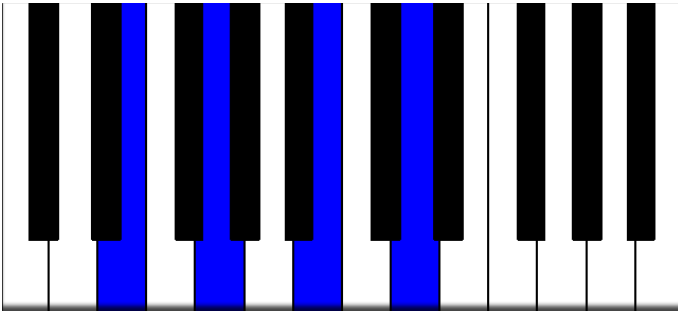
Example 1: Treble Clef

Fmaj7 Em7

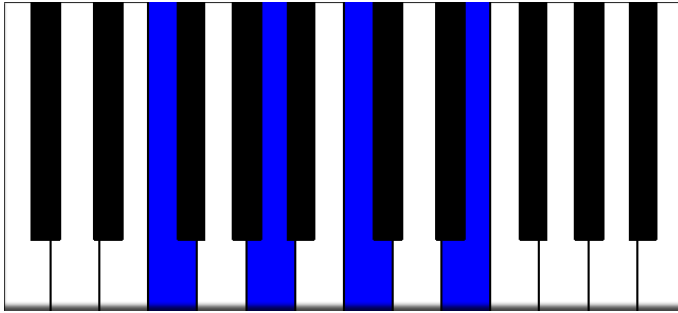
Example 2: Bass Clef

Am7 G7 Am7 Bm7 \flat 5

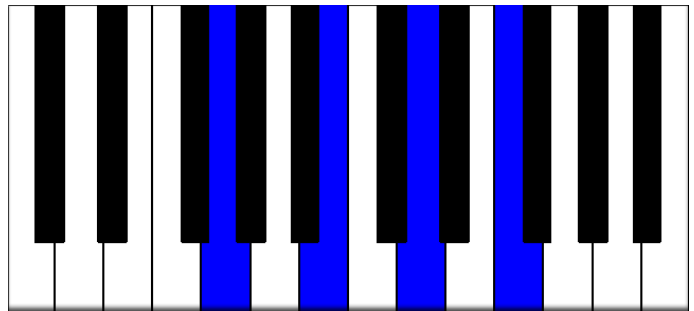
Notes for Improvisation



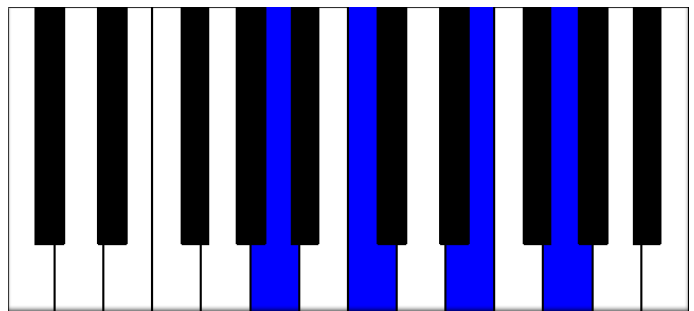
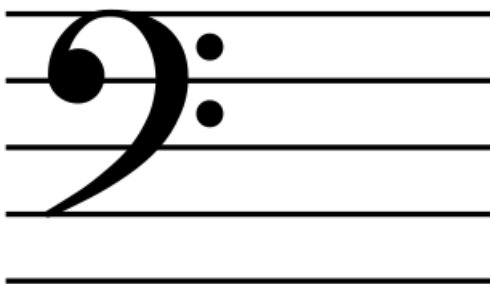
Em7 E G B D (on the lines in treble clef, add F on top)



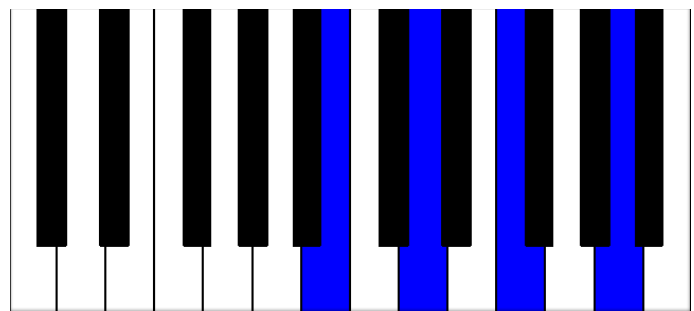
Fmaj7 F A C E (between the lines in treble clef)



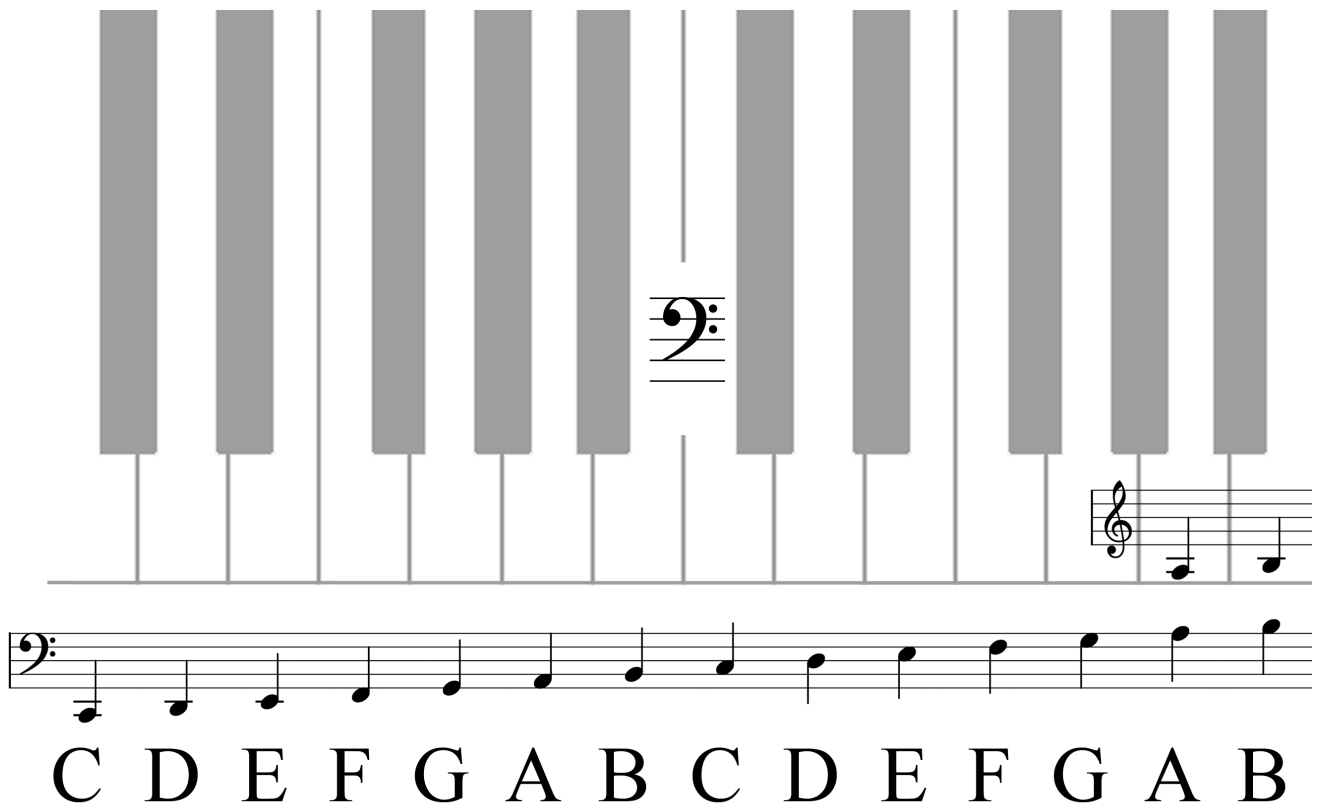
G7 G B D F (on the lines in bass clef)



Am7 A C E G (between the lines in bass clef)



Bm7b5 B D F A (on the lines in bass clef)



Bass Clef

Notes on the lines from bottom to top:

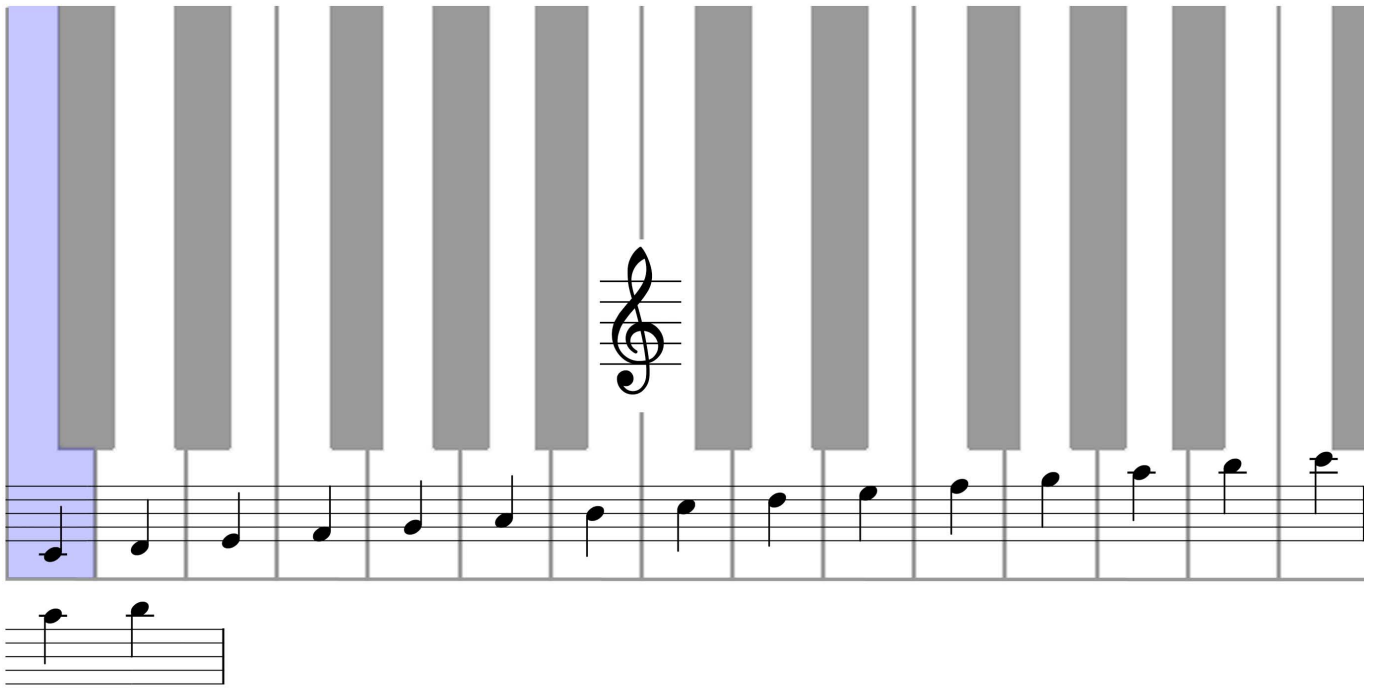
G B D F A

Great Big Dogs Fight Animals

Notes between the lines from bottom to top:

A C E A

All Cows Eat Grass



C D E F G A B C D E F G A B C

Treble Clef

Notes on the lines from bottom to top:

E G B D F

Every **G**ood **B**and **D**raws **F**ans

Notes between the lines from bottom to top:

F A C E